The background of the entire page is a light gray, stylized circuit board pattern. It features a complex network of lines representing traces, with various circular and rectangular shapes representing components and vias. The pattern is dense and covers the entire area.

# USB 2.0 FOR NEC CHIPSET

Version 1.3

# User Manual

# Introduction

## Add a USB device to your PC

Instantly add USB peripherals to your PC or Notebook. Never open your computer case again after you have your USB Port (PCI/PCMCIA) card installed and say good-bye to confusing cables.

The USB Port (Universal Serial Bus) allows you to instantly connect USB devices to your computer. The USB Port will allow you to attach 2/3/4/5 USB devices instantly.

You never have to worry about running out of slots in your computer or those confusing IRQ's again. You can also "Hot Swap" your USB devices. What does this mean? You never have to power down your PC to install hardware again. Gamers can switch joysticks on the fly. Welcome to the USB Revolution.

### 1.0 USB Port Features

---

The PCI is a true 32-bit PCI-Bus USB card. The CardBus is the trade name for an advanced PC Card (also known as PCMCIA card) specification. It fits in a slot like a conventional PC card and 32-bit path is used for data transfer. It supports the following I/O features:

- ? 2/3/4/5 USB ports (root hub and two/three/four down stream function ports)
- ? Auto detect speeds and connections of devices
- ? Support High Speed Data Transfer Rates of up to 480 Mbps
- ? Integrated physical layer transceivers
- ? Normal and low power operating modes
- ? Fully Plug and Play compatible
- ? OHCI (Open Host Controller Interface) specification V1.0 register compatible
- ? USB specification V.1.0 compatible

***\*\* If you use PCMCIA USB card. At normal time, you don't need to use AC-DC adapter that you connect to USB devices. Only in one case that system request more power and please use our AC-DC adapter.***

- ? **AC-DC Adapter: 120V INPUT 60Hz 10.1w, OUTPUT 5V DC 1A  
230V INPUT 50Hz 100mA, OUTPUT 5V DC 1A**

### 2.0 System Requirements

---

This setup program will install the driver for NEC USB 2.0 Host Controller. Before you start to run the setup program, please make sure your computer is an IBM PC-compatible system.

This driver can be used either the following operating systems:

- ~~☒~~ Windows98
- ~~☒~~ Windows98 Second Edition.
- ~~☒~~ Windows Millennium.
- ~~☒~~ Windows 2000.
- ~~☒~~ Windows XP.

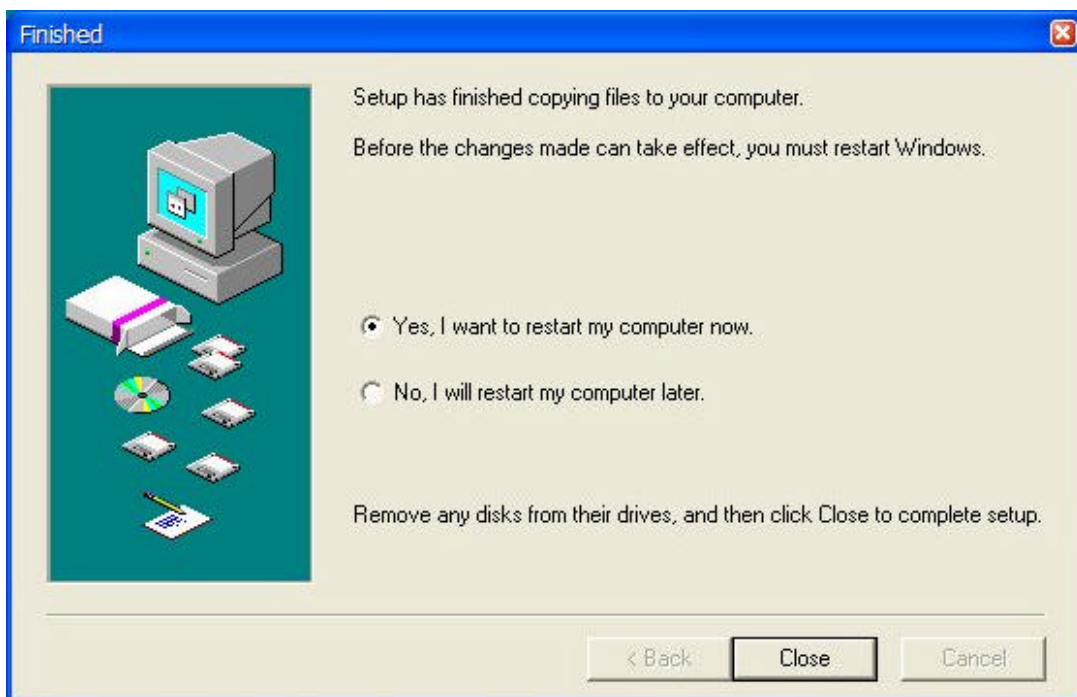
### 3.0 Driver Limitations

---

Current limitations of the driver are: Composite devices and Hi-Speed Isochronous Transfers are currently not supported.

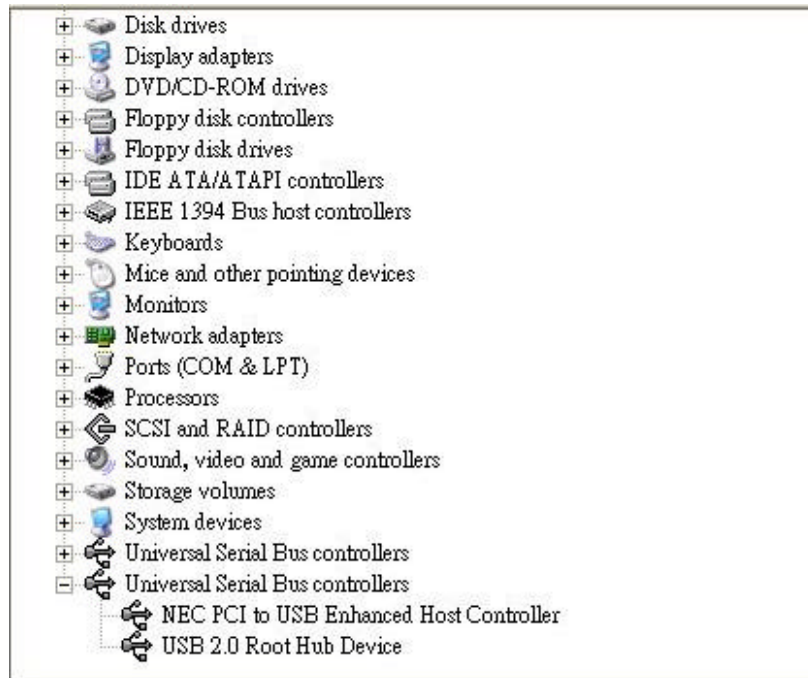
## 4. Driver Installation

1. Please make sure this PCI/PCMCIA card has been installed on your system correctly.
2. Insert the Driver CD to your CD-ROM and find the path = "\USB\USB2.0-NEC\PC Drive!". Click the **Setup.exe** File to install. After copy files to your system, it will show the information to ask you restart computer. Select the "**Yes, I want to restart my computer now.**" to restart.



3. After restarting your system, please check if your device works.

[My Computer] ↗ [Properties] ↗ [Hardware] ↗ [Device Manager]



Note! If there is a yellow exclamation mark on “NEC PCI to USB 2.0 Enhanced Host Controller” or “USB 2.0 Root Hub Device”, please remove this item from the “Device Manager” by clicking the “Uninstall” button and click “Refresh” to re-install this driver again.